

TeamTable™ Flex

TeamTable™ Flex redefines the boundaries of collaboration by seamlessly integrating meetings, presentations, and whiteboarding into one powerful solution. TeamTable™ Flex not only introduces cutting-edge features but also provides a pathway to unlock more possibilities for existing installations. Seamlessly convert your touch monitor into a TeamTable™ in just 5 minutes, safeguarding your existing investment while expanding opportunities for advanced users. Whether utilizing a single display or a companion display, TeamTable™ Flex eliminates the hassle of switching sources, enabling a truly seamless and collaborative environment.



Features

Meetings

Use with existing Teams Rooms, Zoom Rooms, Meet, Webex or any other video conference. Control your meeting directly from the touch display.

Use with any meeting room appliance, new or existing to protect your investment.

Install as a single display with a video bar or as a companion interactive display to an existing video room.

Compatible with all [Microsoft Teams Rooms certified bars](#)

HDMI Input up to 4K UHD (3840*2160)

Presentation & Third-Party Applications

Proprietary wireless interactive screensharing solution

Best-in-class touch latency with pre-inking

Resolutions up to 4K60Hz² through Miracast and Airplay

Touchback with up to 16 simultaneous touches Pen/finger differentiation with tool support

Third party application support with touchback (includes whiteboarding apps like Miro, Mural or others)

Simultaneous screensharing with HDMI in (Video meetings)

Whiteboarding

Best-in-class touch performance with zero-latency inking

Ad-hoc whiteboarding or remote collaboration in real-time with your colleagues from TeamTable™ and/or personal devices

Load and save boards on your personal cloud connected account

Seamless integration with Microsoft Teams

Secure, tenant-based cloud and device administration¹

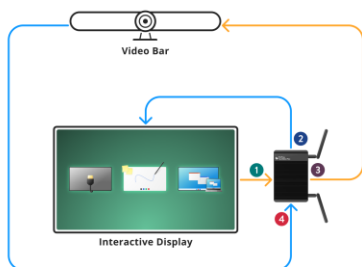
Identity management system integration (Entra ID)¹

Configurations

Single display setup

Add the TeamTable™ Flex to your existing interactive touch display and meeting solution.

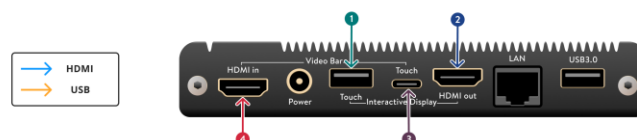
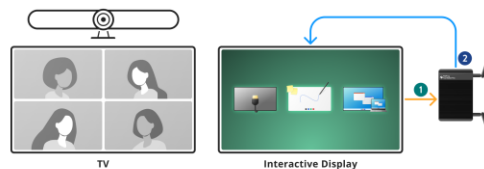
No additional accessories needed, everything you need is included in the box.



Companion setup

Add the TeamTable™ Flex with your existing interactive touch display and meeting solution with front-row display and control display.

No additional accessories needed, everything you need is included in the box.



Administration and management

Device management

Setup your device through an easy onboarding process within minutes of unboxing

Manage your device configuration both on the device and through the web ¹

Automatic software updates including regular security updates

Administration

Administration of user accounts, device settings and permissions of all devices in your tenant through the cloud administration platform ¹

Automatic or manually administered device updates for all devices within your tenant through our cloud administration platform ¹

Leverage SAML-based SSO (single sign-on) to seamlessly integrate TeamTablet™ Flex into your existing identity management systems (eg. Entra ID) ¹

Technical specifications

TeamTablet™ Flex

Screensharing	Native protocols: Miracast, AirPlay No dongles or apps required Touchback and pen with Zero-latency pre-inking (Miracast) Input resolution up to 4K (3840 x 2160) ² Intelligent channel switching and infrastructure mode for congested wireless environments ³ Multi-network for employee and guest connections for AirPlay ³
Whiteboarding	Always embedded whiteboard available for ad-hoc sessions Realtime collaboration and cloud storage Best-in-class inking performance Seamless integration with Microsoft Teams Third-party whiteboarding apps supported over screensharing (eg. Miro, Mural)
Interactive display compatible	Best performance with compatible InGlass touch displays Works with other compatible touch displays with varying performance
Processor	Quad Core ARM Cortex A73 and Quad Core ARM Cortex A53
Update policy	New features and security enhancements OTA updates (automatic or administrator controlled ¹)
Video Output	HDMI 4K UHD (3840*2160) @ 60Hz with HDMI-CEC and HDCP 1.4/2.3
Video Input	HDMI 4K UHD (3840*2160) @ 60Hz with HDMI-CEC and HDCP 2.2
Audio Output	HDMI up to 192 kHz
WiFi	WiFi 6 (2.4 GHz & 5 GHz) 802.11a/b/g/n/ac/ax (WPA2-PSK)
Ethernet	10/100/1000M Gigabit RJ45 LAN
Bluetooth	5.1
Power	Standby: 0.5W, Typical: 5W, Peak: 8W Power supply: 12V 12W
Noise Level	Fanless noise-free design
Operating temperature	+0C to +40C (Humidity: 20 - 80% non-condensing)
Storage temperature	-20C to +60C (Humidity: 10 - 90% non-condensing)
Dimensions	138mm x 100mm x 28mm (W x D x H)
Weight	415g (582g with wall mount)
Package dimensions	215mm x 152mm x 76mm (W x D x H)
Package weight	1085g
Accessories	1 x HDMI A - HDMI A 1 x USB-C - USB A 1 x USB A - USB B 1 x DC Power supply (EU, US or UK wall plug) 1 x Wall/Screen mount
Warranty	3-year standard
Maintenance and Support	Yes (perpetual)
Certifications	CE, FCC, RoHS, REACH
Other	Anti-theft system

¹ Available with an Enterprise subscription in a future update

² Miracast and Airplay support 1080p60Hz, 4K60Hz available in a future update

³ AirPlay AP support and Miracast channel switching coming in a future update